

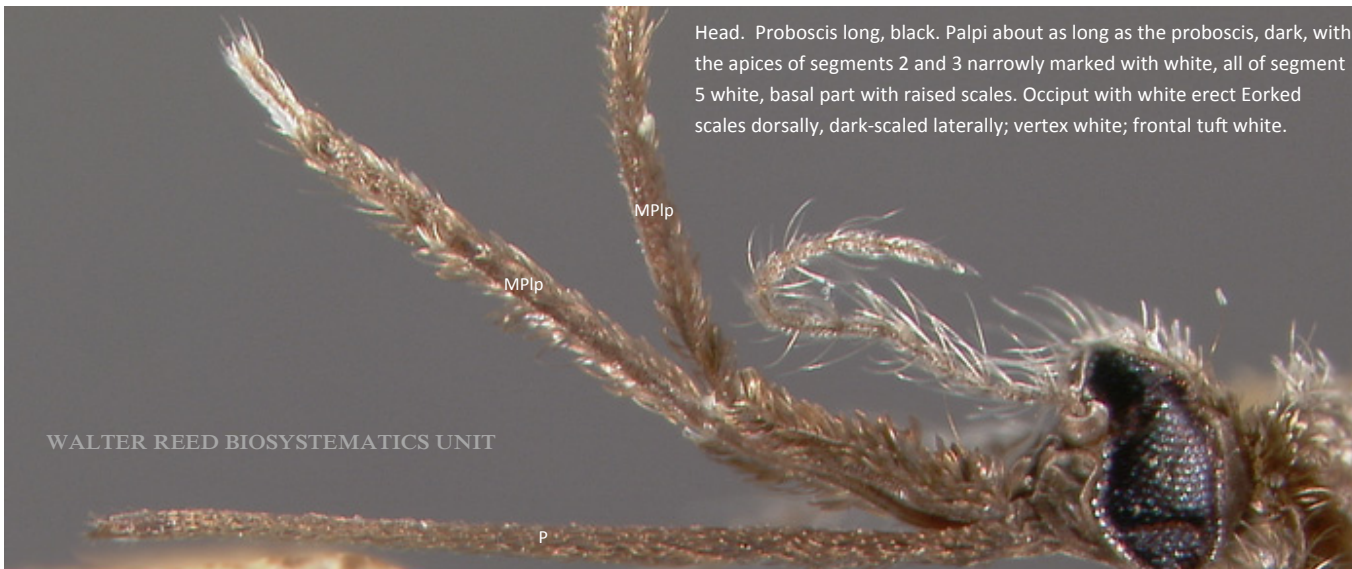


WALTER REED BIOSYSTEMATICS UNIT

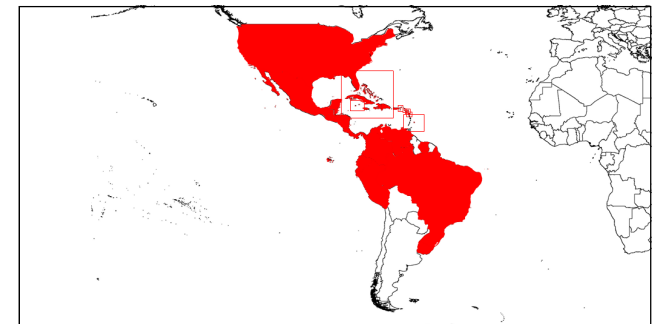


WALTER REED BIOSYSTEMATICS UNIT

Head. Proboscis long, black. Palpi about as long as the proboscis, dark, with the apices of segments 2 and 3 narrowly marked with white, all of segment 5 white, basal part with raised scales. Occiput with white erect Eorked scales dorsally, dark-scaled laterally; vertex white; frontal tuft white.

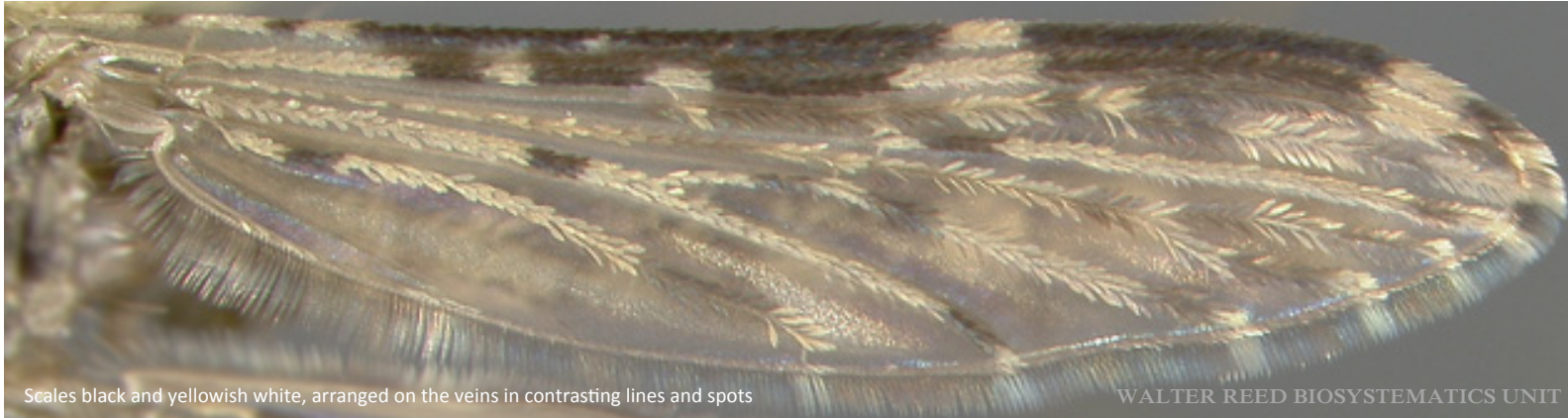


WALTER REED BIOSYSTEMATICS UNIT



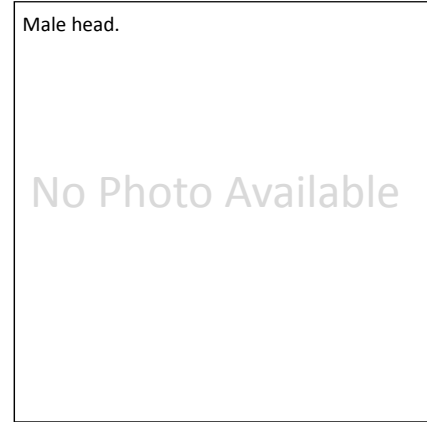


Anopheles (Nyssorhynchus) albimanus Wiedemann, WRBU specimen ANalb, Character descriptions: Carpenter and LaCasse, 1955:55



Scales black and yellowish white, arranged on the veins in contrasting lines and spots

WALTER REED BIOSYSTEMATICS UNIT



Male head.

No Photo Available



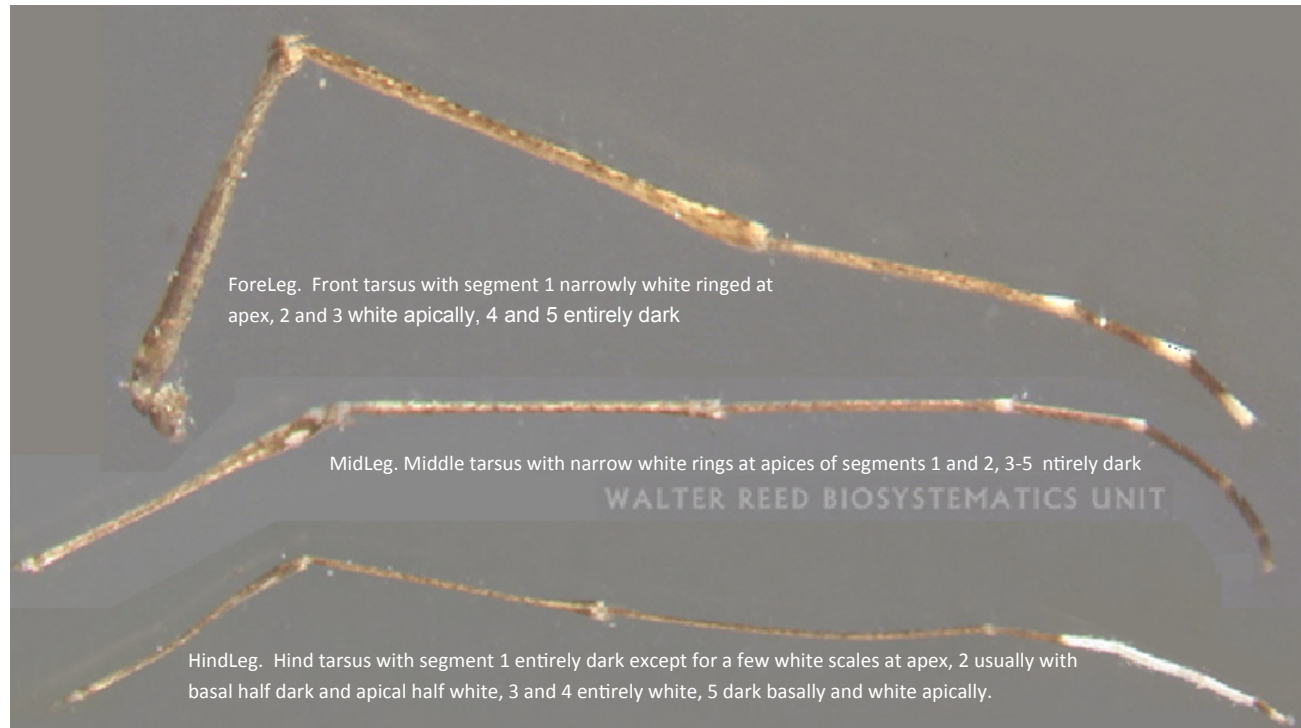
WALTER REED BIOSYSTEMATICS UNIT



WALTER REED BIOSYSTEMATICS UNIT

Bionomics: The larvae are found in a wide variety of permanent water habitats. They are salt tolerant. Habitats are usually in full sunlight or partial shade containing abundant floating, emergent vegetation and floating scum and algae. Habitats frequently have muddy bottoms and turbid or polluted water.

Medical Importance: In 17 of 20 Caribbean region countries, *An. albimanus* is the principal malaria vector.



ForeLeg. Front tarsus with segment 1 narrowly white ringed at apex, 2 and 3 white apically, 4 and 5 entirely dark

MidLeg. Middle tarsus with narrow white rings at apices of segments 1 and 2, 3-5 ntirely dark

WALTER REED BIOSYSTEMATICS UNIT

HindLeg. Hind tarsus with segment 1 entirely dark except for a few white scales at apex, 2 usually with basal half dark and apical half white, 3 and 4 entirely white, 5 dark basally and white apically.